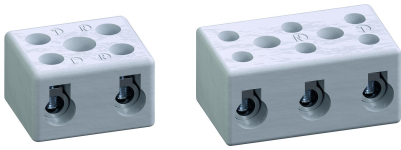


# 4010-B / 4011-B

Socket terminal blocks with mounting holes



## GENERAL INFORMATION

No. of poles	2 + 3
Additional Information	4010-B: one mounting hole 4011-B: two mounting holes

## TECHNICAL DATA

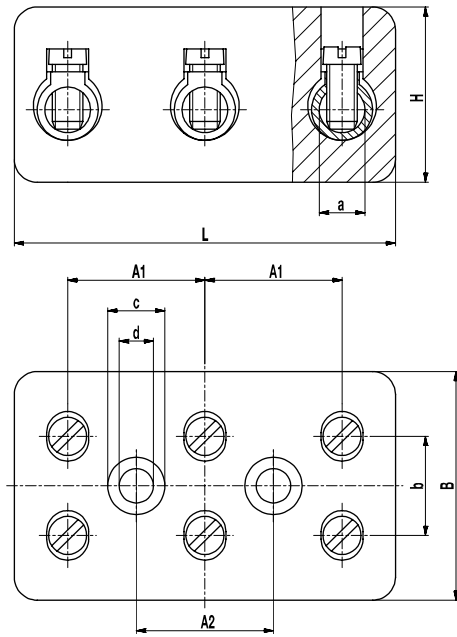
Clamping Range	<i>solid / stranded / AWG</i> 2,5 - 16 mm <sup>2</sup> / 1,5 - 10 mm <sup>2</sup> / 16 - 8 AWG [1]
Rated Cross Section	10 mm <sup>2</sup>
Wire Stripping Length	8,5 mm ± 1 mm
Rated Insulation Voltage	750 V acc. to EN 60998-1
Rated Current	57 A
Torque	1,2 Nm
Base mounting	Recommendation: 4010-B: Cylinder head screw M5 4011-B: Cylinder head screw M4 both versions with matching washer; max. torque 1.5 Nm; use of an elastic & insulating substrate.
Other specifications	Terminal blocks must not be strung together without considering the clearance and creepage distances.

## APPROVALS

	Current [A]	Voltage [V]	Group	AWG	[Nm]
	50	600	B, C	14 - 8	1,13
	5	600	D	14 - 8	1,13

## CONFIGURATIONS

Item	Article number	PU
4010-B	10.610.010	70
4011-B	10.610.011	36



### Dimensions (mm)

Type	L	B	H	A1	A2	a	b	c	d
4010-B	35	29	21	20	-	5,5	12,5	9	5,5
4011-B	51	30	23	18	18	6	13	7,5	4,5

## MATERIAL

Moulding	Technical ceramics
Comparative Tracking Index	CTI ≥ 600
Insulating Group	I
Temperature Range	-40°C up to 250°C
Terminal body	Nickel plated brass
Screw	M4; Zinc plated steel, blue passivated

[1] The clamping range for flexible and AWG conductors was determined using ferrules. Use of flexible conductors without ferrules is not recommended.